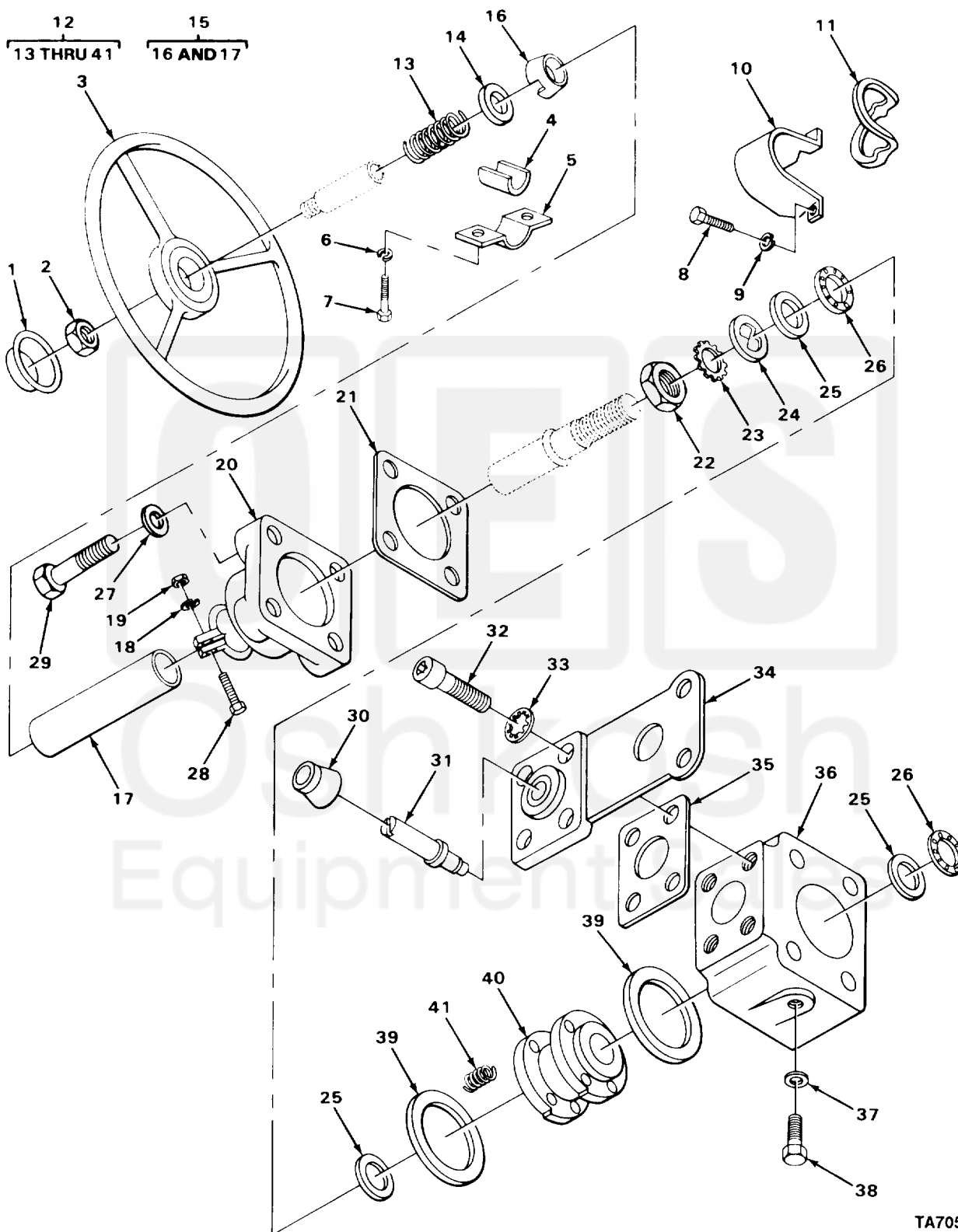


SECTION II

TM 10-3930-242-24P



TA705460

FIGURE 134. STEERING GEAR (UPPER SECTION).

Current part is item (30) on diagram. Available at [www.oshkosh.com](http://www.oshkosh.com)

ITEM NO	SMR CODE	CAGEC	PART NUMBER	DESCRIPTION AND USABLE ON CODES (UOC)	QTY
GROUP 1401 MECHANICAL STEERING GEAR ASSEMBLY					
FIG. 134 STEERING GEAR (UPPER SECTION)					
1	PAFZZ	77915	6000553	BUTTON, PLUG	1
2	PPFZZ	77640	026115	NUT, PLAIN, HEXAGON UOC: CQK, U72	1
2	PAFZZ	77640	C20	NUT, PLAIN, HEXAGON UOC: CMP, CMQ, U73, U74	1
3	PAFZZ	77915	79210	STEERING WHEEL	1
4	XBFZZ	04285	M67845	CLAMP, INSULATOR STEERING GEER BRACKET UOC: CQK, U72	1
4	XBFZZ	03677	LT1-1096	INSULATION STEERING GEAR BRACKET UOC: CMP, CMQ, U73, U74	1
5	XBFZZ	04285	S69108	BRACKET STEERING GEAR ASSEMBLY MTG UOC: CQK, U72	1
5	XBFZZ	03677	LT1-1085	BRACKET STEERING GEAR ASSEMBLY MTG UOC: CMP, CMQ, U73, U74	1
6	PPFZZ	96906	MS35338-45	WASHER, LOCK STEERING GEAR BRACKET MTG	2
6	PAFZZ	96906	MS35338-046	WASHER, LOCK BRACKET MTG	2
7	PPFZZ	96906	MS90728-31	BOLT, MACHINE STEERING GEAR BRACKET MTG	2
8	PPFZZ	96906	MS90728-6	SCREW, CAP, HEXAGON H LEVER COVER MTG	2
9	PPFZZ	96906	MS35333-40	WASHER, LOCK LEVER COVER MTG	2
10	PAFZZ	77640	415138	COVER, LEVER STEERING WHEEL	1
11	PAFZZ	77640	415149	GASKET STEERING WHEEL	1
12	PAFZZ	77640	HPS71544	STEERING GEAR ASSEM	1
13	PAFZZ	77640	401249	. SPRING, HELICAL, COMP STEERING COLUMN	1
14	PPFZZ	77640	028293	. WASHER, KEY STEERING COLUMN	1
15	PPFZZ	77640	096119A1-4231	. JACKET, STEERING	1
16	PAFZZ	77640	065997	. . BEARING, BALL, STEERI	1
17	XAFZZ	77640	096119-4225	. . JACKET	1
18	PAFZZ	96906	MS35338-046	. WASHER, LOCK JACKET CLAMPING	1
19	PPFZZ	96906	MS51967-8	. NUT, PLAIN, HEXAGON JACKET CLAMPING	1
20	XDFZZ	77640	HPS526001	. COVER	1
21	PAFZZ	77640	034060	. GASKET TOP COVER	1
22	XBFZZ	77640	9127709	. NUT, LOCK STEERING COLUMN	1
23	PPFZZ	77640	028294	. WASHER, KEY STEERING COLUMN	1
24	PPFZZ	77640	028293	. WASHER, KEY STEERING COLUMN	1
25	PPFZZ	77640	028295	. BEARING, WASHER, THRU HOUSING	3
26	PAFZZ	97370	E72800PC6	. RETAINER AND ROLLER STEERING COLUMN	2
27	PPFZZ	96906	MS27183-14	. WASHER, FLAT TOP COVER MTG	4
28	XDFZZ	77640	181378	. SCREW, CAP, HEXAGON JACKET CLAMPING	1
29	PPFZZ	96906	MS90725-67	. SCREW, CAP, HEXAGON H TOP COVER MTG	4
30	PAFZZ	77640	032261	. BOOT, DUST AND MOIST VALVE	1
31	PAFZZ	77640	415354	. ACTUATING, LEVER, STE	1

Current part is item (30) on diagram. Available at [www.oshkosh.com](http://www.oshkosh.com)